

INFORMATION PACKAGE AUTH

1. Accommodation

The Mandrino Hotel is in the corner of 2, Adigonidon Str. and 29, Egnatia Str.

For those of you that have requested accommodation, double bed rooms have been reserved. If some of you want 3 bed rooms, there must be a group of at least 6 persons, in order not to have one person to pay for a double room. This will have to be arranged upon arrival in the hotel with the hotel desk. The total accommodation cost per student (8 nights) is 175,0 € in a double-bed room and 146,67 € in a three-bed room if it is available. The price includes breakfast and all taxes. You will pay directly at the hotel before departure. The web page of the hotel is <http://www.mandrino.gr/>. Please note that the hotel has a limited availability this year because of a very international commercial fair that takes place on 17-19 of March 2017. This has affected the hotel room prices for the respective days.

2. How to reach the hotel

2.a From the airport:

There is a bus from the airport, Nr. 78 (78N from midnight to 05:00 in the morning-every 30 minutes during the night) but it might not be convenient for a new-comer, since it does not leave you near the hotel. The bus when you are leaving from Thessaloniki is passing in front of the hotel. When you arrive it passes a few blocks away, from TSIMISKI street (look at a map of the city). The hotel is in EGNATIA street. So you will have to walk a few blocks. The alternative is to take a taxi. The cost must be about 15 to 20 euro. Take into account that part of the price is an extra charge for trips from and to the airport and for night transportation (24:00-05:00). There is also an extra charge for luggage.

2.b From the Railroad station:

The hotel is relatively near the RR station (about 1 km), but I would not recommend to walk, especially if you carry luggage, even more so if you arrive late in the night. So, you catch one of the Nr. 2, 10 or 14 busses departing from the railroad station and descend at the second bus stop

(KOLOMVOU in Nr. 14 of EGNATIA street). You are at the opposite side of EGNATIA street from your hotel, which is at the Nr. 29. If you arrive late in the night you can use bus Nr. 78N, connecting the Interurban Bus Station, the Railroad Station and the Airport.

3. How to reach the building of the Faculty of Engineering from the hotel

a. Walking:

You take EGNATIA street and walk up to Syntrivani Square. You must have the Metro Worksite 1 in your left and hotel ABC in your right (see university campus plan and google map in pages 5 and 6). You continue in EGNATIA street up to Metro Worksite 2. In the right hand corner of the Site (as you look at it) there is a street. You cross this street and walk along the railing up to the first opening. You must see in front of you the picture at the end of this text (Façade). This is the entrance of the main building of the Faculty of Engineering. You climb the stairs, enter the building and you are in the main entrance hall of the Faculty of Engineering.

b. By bus (<http://oasth.gr/>):

You must buy a ticket from one of the newspaper kiosks (the standard one costing 0,80 €) and "cancel" it inside the bus (orange boxes). I am not sure if the machines return change, so it is better to have the exact price. The standard 0,80 € ticket is valid only for one trip. There are also "90 minutes" tickets costing 0,90 €. These tickets expire 90 minutes after the first cancellation and permit the transfer between any bus lines up to two times, as long as the ticket is re-cancelled within 90 minutes of the first cancellation. You can also buy a ticket from the in-bus ticket machines. In this case the ticket costs 0,10 € more. There are also student tickets priced 0,40 and 0,50 € respectively, but in order to use them you must be able to present, in the case of a possible control, a valid international student card.

You have to get to EGNATIA street and catch one of the Nr. 2, 10, 14, 27 or 31 busses at the bus stop KOLOMVOU in Nr. 14 of EGNATIA street (opposite side of EGNATIA street from your hotel). Be careful to select the correct side of the street. If we suppose that EGNATIA goes roughly from west to east, you must go towards the east.

You descend at the AHEPA (H is pronounced like the h in "home") bus stop (it is the bus stop marked in the maps). **Attention:** for busses Nr. 2, 14 and 27 this stop is the second **after** the Syntrivani square. For the rest it is the first one. You cross the street from the traffic lights in your left and then follow the above "**walking**" instructions. AHEPA is the hospital behind the Faculty of Engineering (buildings with Number 6c in the campus plan).

4. European Dimension Activities

The total cost for the EDA is 35€ per student and will have to be paid upon registration in cash.

A. Sunday, March 12

We will meet at **10:00** in the main entrance hall of the Faculty of Engineering. After registration, we will have a guided visit of **the Archaeological Museum of Thessaloniki** (<http://www.amth.gr/>) and next we will take a guided bus tour of the city and visit some of the monuments. The Early Christian and Byzantine monuments of Thessaloniki have been declared a UNESCO world heritage site in 1988. Entrance is free in the museums and other monument for students from EU universities **but they must show their student ID card.**

B. Saturday, March 18

We will meet at **08:00** in front of the Mandrino hotel. A bus will take us for a guided tour to Vergina and Dion (UNESCO world heritage site-1996).

(<http://en.wikipedia.org/wiki/Vergina>)

(http://en.wikipedia.org/wiki/Dion,_Greece)



5. Information about meals

Lunch and dinner will be in the University Student Club restaurant (the buildings marked A in the Campus Plan). Noon meals will not be available on the days of the European Dimension Activities). The daily fee is 2,20 € per student (2 meals per day) and will be paid directly to the student restaurant.

Serving hours (all days of the week)

Lunch: 12:00 to 15:30

Dinner: 18:30 to 20:30

5. Videos

Have a look at the following videos about AUTH and Thessaloniki:

1. An “official” one

<https://www.auth.gr/en/passing-the-knowledge-baton>

2. An older “official” one

https://www.dropbox.com/s/awe6qpa54yhp1t/Film_Presentation_of_Aristotle_University.mkv

2. The Erasmus office promotional video

<https://eurep.auth.gr/en/media>

3. A promotional video for the 40th annual conference of the European Society for Engineering Education that I organized in 2012

<https://dl.dropboxusercontent.com/u/96089199/sefi2012authThessaloniki.mp4>

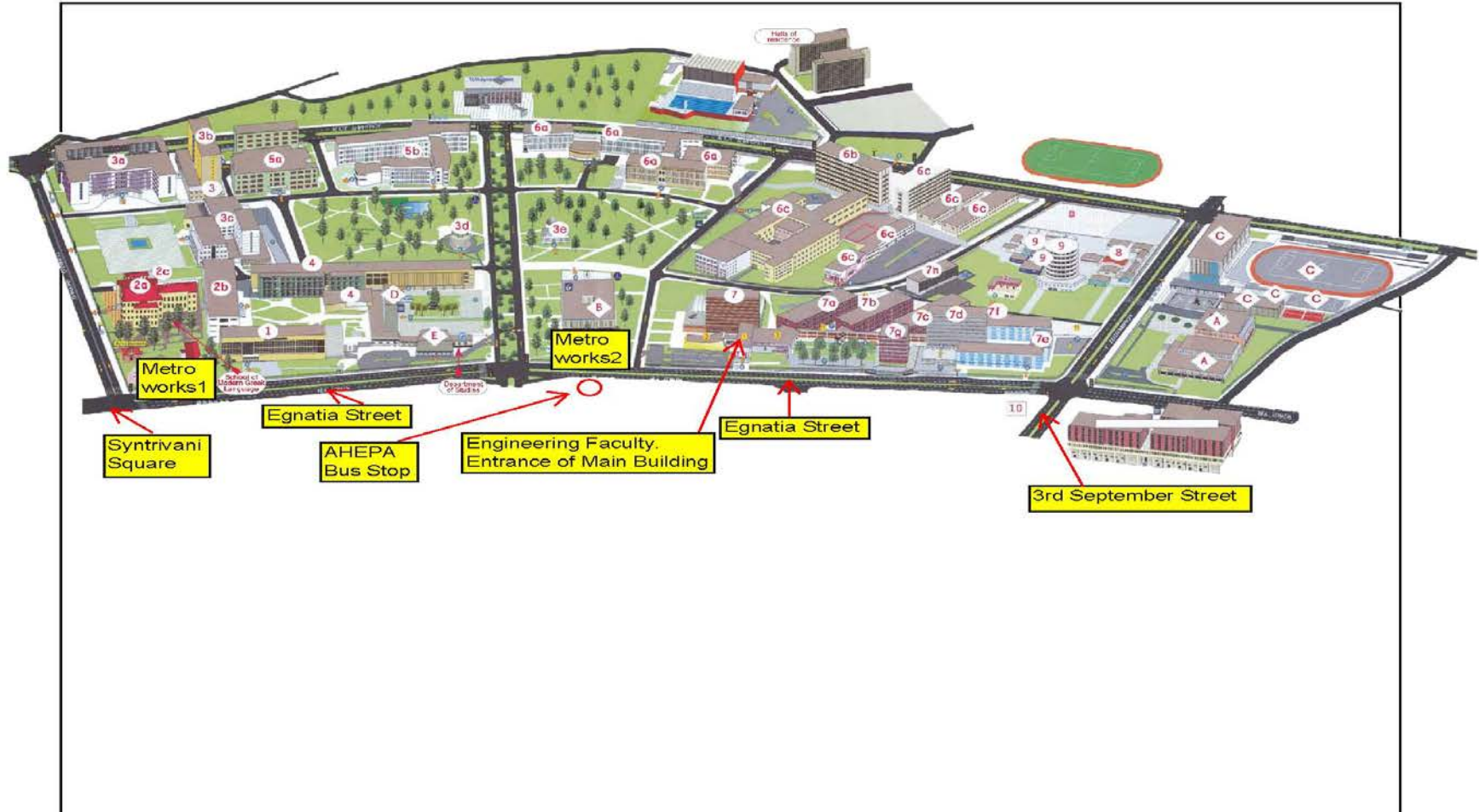
See you in Thessaloniki, Good Luck

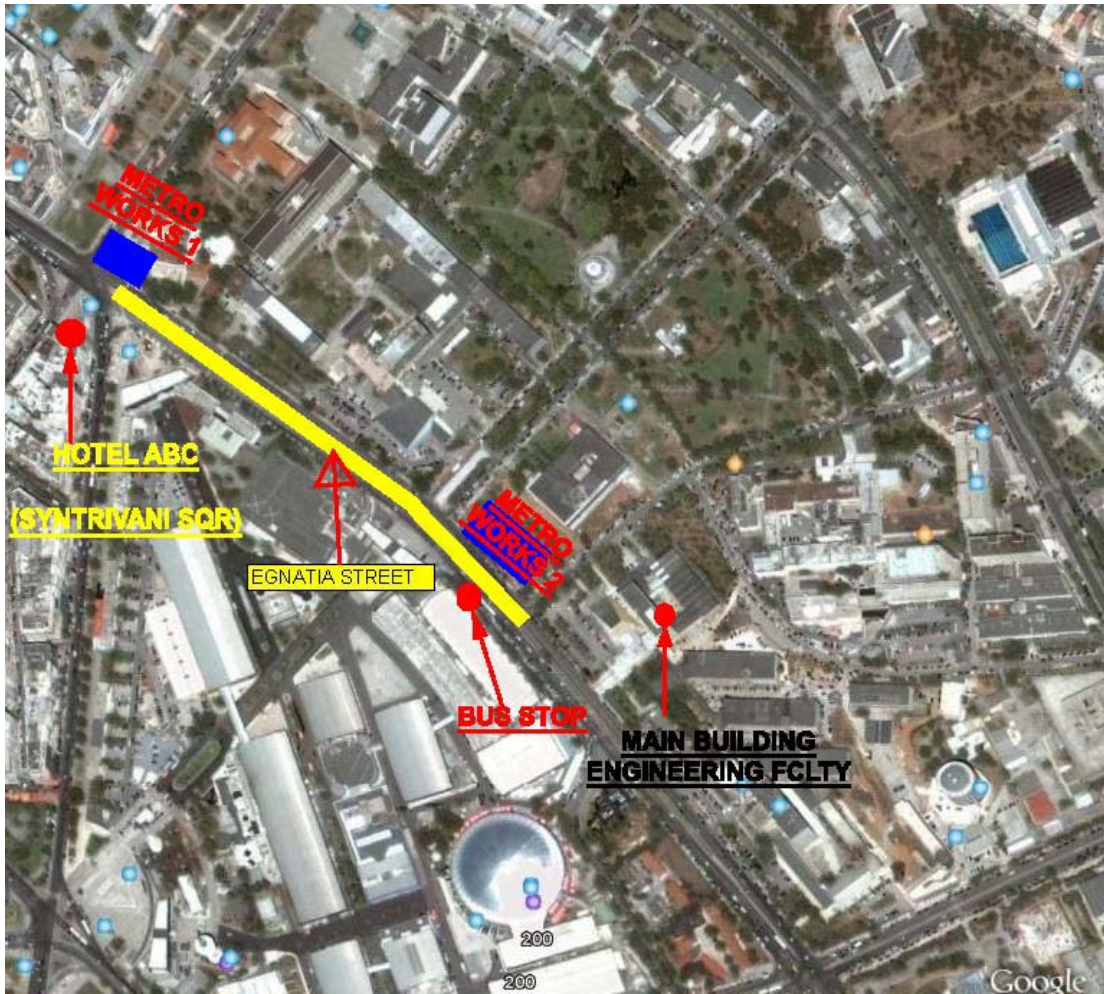
Aris Avdelas

avdelas@civil.auth.gr

Tel. +30 2310 995784, Fax. +30 2310 995642, Mobile (emergency only) +30 6977947197

CAMPUS PLAN OF THE ARISTOTLE UNIVERSITY OF THESSALONIKI





Façade of the Faculty of Engineering